

Community Plan for the Borough of Eastleigh 2009 – 2013





Eastleigh Borough is a good place to live! That's what local residents tell us in surveys and, having lived here since childhood myself, it's my experience too. Surveys also tell us what residents would like to see improved, what needs changing and where our communities need to focus their energy. Residents' views combined with the experiences of local service providers, local businesses and community groups have all helped shape our Community Plan.

The plan seeks to ensure that all areas in the borough - from Chandler's Ford to Hamble-le-Rice and from Fair Oak to Netley - continue to be good places to live over the next 20 years. Of course, that is more easily said than done. Coordinated action will be needed to address the challenges we face, from the current economic downturn, global warming, traffic congestion, to the need for more housing for young people, health issues including obesity, a growing population of over 65s and the need to conserve the green environment and wildlife habitats. That's some challenge!

At the heart of the plan is our vision. This sets out what we need to concentrate on here in our borough. First there is the need for people to feel part of a friendly and supportive community encouraging an active, healthy and happy life. Second is the need to ensure the local economy thrives and provides opportunities for everyone to enjoy a good standard of living. And third is the need to provide a pleasant, attractive and ecologically sustainable environment in which to live, work and play. Based on these top priorities, the plan sets out the actions local organisations will be working on together over the next four years to help turn the vision into reality. The plan itself will adapt to change and be reviewed every four years.

The role of the Eastleigh Strategic Partnership is to bring together and help local partnerships and organisations meet these tough targets. We will provide local democratically accountable leadership for the community, encourage wide ownership of our vision and channel the combined resources of our organisations to improve the quality of life of local residents.



A handwritten signature in black ink that reads 'Keith House'.

Councillor Keith House
Chair, Eastleigh Strategic Partnership

Eastleigh Borough Community Plan

(Sustainable Community Strategy)

What we want to achieve – The reason for the plan



Sustainable Development

This document sets out the Community Plan for the Borough of Eastleigh. This plan was developed by the Eastleigh Strategic Partnership (ESP), which brings together the public, private, community and voluntary organisations that operate in the borough.

The purpose of the Community Plan is to help promote the economic, social and environmental well-being of the local area and contribute towards the sustainable development of the borough and the United Kingdom as a whole. Defined as “ensuring a better quality of life for everyone, now and for generations to come”, sustainable development involves the simultaneous pursuit of 4 objectives:

- Social progress that recognises every person’s needs
- The effective protection of the environment
- The prudent use of natural resources
- The maintenance of high and stable levels of economic growth and employment

Community Well-being

With these objectives in mind, Eastleigh Borough Council and the other members of the ESP have together developed this plan, which is specifically designed to:

- Enable the local communities in the borough to give expression to their needs, aspirations and priorities
- Focus, shape and coordinate the activities of the Council and the public, private, voluntary and community organisations operating in the locality, so that local needs, aspirations, and priorities are efficiently and effectively addressed
- Contribute to sustainable development within and beyond the locality by promoting economic, social and environmental health and well-being in an integrated fashion

Plan Components

The borough’s Community Plan includes the following four components:

- A long term vision for the borough which focuses on the long term outcomes to be achieved
- An action plan identifying shorter term priorities and activities that will contribute to the achievement of the long term outcomes
- A shared commitment to implementing the action plan
- Arrangements to monitor the implementation of the action plan and periodically review the community strategy, as well as reporting progress to the wider partnership and local people



Where we are now – The context for the plan

Location and Population

Located in England's South East Region, the Borough of Eastleigh forms part of the South Hampshire sub-region, which stretches from the rural heart of Hampshire County to the busy Solent coastline. The borough adjoins Test Valley Borough to the north-west, Winchester District to the north, the Borough of Fareham to the east, and Southampton City to the south and west.

The borough covers an area of 79.8 km² (7,980 hectares) and was estimated in 2007 to contain 120,749 people. It is predominantly an urban or suburban location, but contains some important areas of countryside. Its average population density is similar to the neighbouring Borough of Fareham, 8 to 9 times higher than the more rural districts of Test Valley and Winchester, and a third that of the more urbanised city of Southampton. Within the borough are three large urban / residential areas - Eastleigh, Chandlers Ford and Hedge End - and 7 significant settlements, which in order of population are: Bishopstoke, West End, Fair Oak and Horton Heath, Bursledon, Hamble, Netley and Botley.

The borough's age profile is similar to that of the UK as a whole, while the 2001 census indicated that the borough's ethnic minority population comprised 2.6% of the total, which is about half the UK average. The largest ethnic minority group is Asian / Asian British. Given that many people living in the city of Southampton make use of the borough's facilities and services, it is also worth noting that ethnic minorities were estimated to make up around 11% of the city's 230,000 residents in 2006. Looking forward, the borough's population is expected to increase to 127,172 by 2016 and 134,930 by 2026. The greatest predicted increase is for the 65-plus age group, with the number of persons of pensionable age as a proportion of the working age population predicted to rise from 23% in 2001 to 33% by 2026.

Quality of life

For overall quality of life, the borough ranks in the top quartile of districts in England and Wales. It has relatively low levels of deprivation and falls in the top eighth of least deprived local authority areas. The borough experiences much less deprivation than Southampton - which is ranked in the quartile of most deprived local authority areas - but contains rather more deprivation than Winchester or Fareham - which are ranked in the top 15 of least deprived local authority areas (out of a total of 353).

Housing

Since 1900 the number of houses in the borough has grown at a fast but steady pace, with about 10,000 more people being added to the population every decade. The borough was estimated to contain 50,932 dwellings in 2007, but the South East Plan - the key regional planning document - requires 7,080 more to be built between 2006 and 2026. In addition, the plan proposes a Strategic Development Area (SDA) to be built to the north / north east of Hedge End. This would contain up to 6,000 dwellings and straddle the borough's boundary with Winchester District.

Future housing demand is driven by planned employment growth for the South Hampshire sub-region, which will require dwellings for new workers, and by changes in household size. As elsewhere in the UK, average household size has fallen and is expected to continue falling: from 2.39 in 2006 to 2.23 in 2026. This mainly results from increasing numbers of one person households, which are predicted to rise in the borough from 13,630 in 2006 to 21,420 in 2026. The credit crunch's long-term impact on housing is hard to predict and, although house prices have fallen sharply, the level of new construction in the borough has not yet done so. The borough has a high level of owner occupation (80%) and, despite the high ratio of average property prices to average earnings that prevailed before the credit crunch, the availability of cheap credit had meant that new buyers were not totally excluded from the market.

The Council's housing strategy has a target to provide 150 new affordable homes per year. Between April 2006 and March 2009, 578 new affordable homes were completed, with over three quarters being achieved via the Council's policy of seeking a proportion of affordable homes on all housing sites of 15 dwellings or more. In terms of housing stock condition, the borough has a higher percentage of modern housing than is average in England. This means fuel poverty (defined as households receiving income-based benefits and living in a home with a low energy efficiency rating) is relatively low in the borough and is experienced by just 2.3% of households.

Employment

There are around 5,000 businesses operating in the borough, and together these provide employment for around 60,000 people. The fastest economic growth in recent years has been in retailing and transport, while the large proportion of people historically employed in manufacturing compared to elsewhere has declined. The borough's economy is closely linked to the South Hampshire sub-regional economy, which has tended to perform economically less well than the South East Region overall. As part of the Partnership for Urban South Hampshire (PUSH), the Borough Council is committed to helping improve the economic performance of the local area.

Compared to the nation as a whole, the borough has long had high employment levels and relatively few working-age benefit claimants. However, its close neighbours (apart from Southampton) have tended to do slightly better. Recession inevitably has an impact on employment levels and between April 2008 and April 2009, the number of Job Seekers Allowance claimants rose from 1.2 to 2.5 percent of the borough's working age population. Overall, the borough has low levels of income deprivation, although pockets exist in the Pilands Wood (Bursledon), Stoke Park (Bishopstoke), Velmore and Aviary (Eastleigh) housing estates.

Education

Average achievement at GCSE level across the borough is relatively high by national and Hampshire standards, although levels of educational attainment vary widely from institution to institution. The qualification levels of the working population also tend to be higher, with more people being qualified to NVQ2 level or to NVQ4 level (degree level) than almost all the borough's neighbours. However, the proportion of people with no qualifications is also slightly higher, and the Eastleigh South and Central Wards show raised levels of education and skills deprivation. Other areas for potential improvement include job-related training and adult learning opportunities, which both involve a lower proportion of the population than is the case nationally or in neighbouring districts.

Transport

The borough has excellent communication links by road (the M3 and M27), rail (the London-Bournemouth and Brighton-South Wales railway lines) and air (Southampton International Airport). However, at peak times many roads in the borough suffer significant congestion. The amount of

congestion matches the high and increasing traffic flows on the borough's motorways, which are the highest in Hampshire. Car ownership in the borough is relatively high, while overall bus use has been on the decline and the proportion of people travelling to work by cycling, walking or public transport is relatively low.

Crime

Despite the borough being a relatively safe, low-crime area, fear of crime tends to be higher than expected. Particular concerns expressed by residents focus on anti-social behaviours, particularly those involving the misuse of alcohol. There are also a few forms of crime that present greater challenges for the borough. Criminal damage (arson, vandalism and graffiti) accounts for about a quarter of recorded crime and occurs at a higher rate than for a peer group of similar profile districts. Vehicle crime accounts for over one-eighth of recorded crime, with theft from vehicles being more of an issue than theft of vehicles. Violent offences also tend to occur at a slightly higher rate for the borough than for its more rural neighbours.

Recreation

The borough contains a number of important historic and archaeological sites, such as Netley Abbey, Hamble Common, Bursledon Windmill and Botley Mill. It also features an aviation, railways and waterways heritage of national significance. In the field of arts, the borough houses a nationally recognised jazz venue at the Concorde Club, a nationally recognised centre for contemporary dance at The Point, and a regional centre for music at Thornden Hall. Major leisure and shopping venues include Europe's largest combined Sainsbury's / Marks & Spencer's shopping centre at Hedge End, and the newly-expanded Swan Centre indoor shopping and entertainment complex in Eastleigh.

Important sports locations include: the Rose Bowl, which is the home of Hampshire County Cricket; the River Hamble, which provides the headquarters for the Royal Yacht Association; and the Fleming Park Leisure Centre, which is one of the best sports centres in Southern England. Opportunities for informal recreation and enjoyment of the countryside are provided by a network of parks, including the Itchen Valley Country Park and the Royal Victoria Country Park. Despite having fewer sports-related buildings than the South East Region average, overall satisfaction with the borough's sports and leisure facilities is higher. Satisfaction with the borough's parks and open spaces is also high. However, in the borough's southern parts, residents tend to express less satisfaction with activities for teenagers and availability of cultural facilities, such as museums, theatres and concert halls.

Health

Generally residents' health appears good compared to the region and the country as a whole, although the influences of lifestyle and environment result in poorer health in disadvantaged areas. The borough has a lower average mortality rate than England and Wales, although the rates for the less-urbanised neighbouring districts are even lower. While death rates are falling overall, cardiovascular disease and cancer remain the major killers, and targeted prevention and treatment activities will be required to reduce some of the health inequalities associated with these diseases.

As in other parts of the country, lifestyle-related health issues represent a growing challenge for the borough. Smoking, obesity, sexually-transmitted infections and alcohol-related harm have all increased for both young people and adults. Another key challenge is the effect of an ageing population, with the proportion of the population aged over 65 being predicted to increase from 15% in 2006 to 18% in 2016 and to 22% in 2026. This is expected to have significant consequences for health and long-term care services, creating a challenge not merely for public services, but also for informal carers such as family and friends.

Relationships

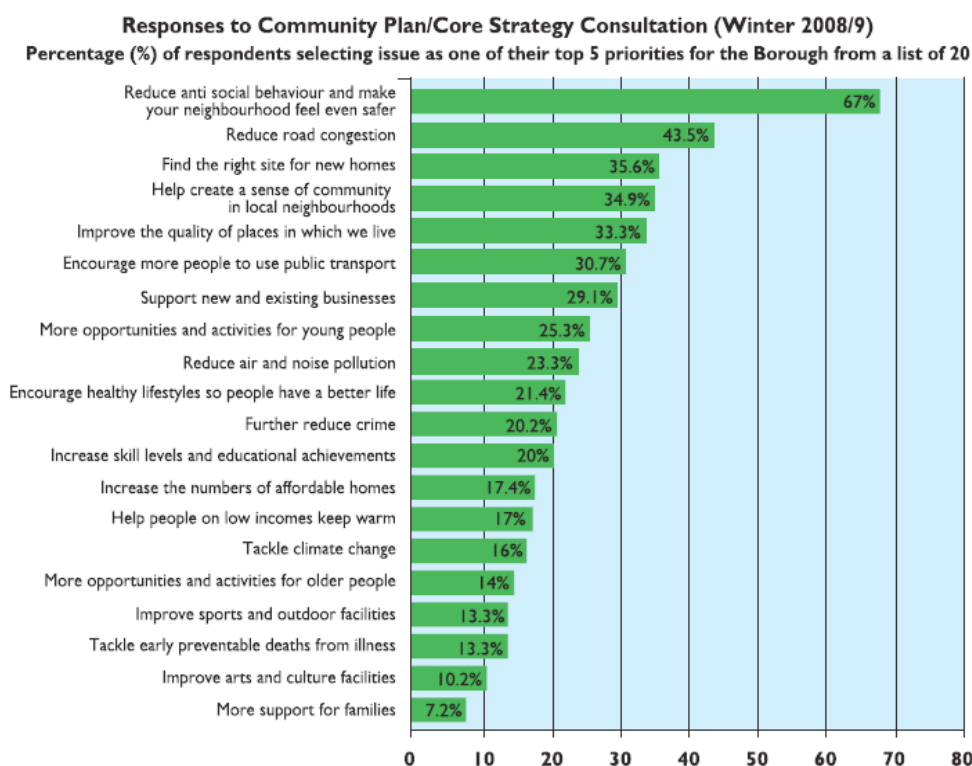
Overall, the borough enjoys relatively high levels of community involvement and over a tenth of the borough's area has nature conservation importance. Of particular note is the Itchen River which represents a chalk stream environment of European importance, but which is threatened by over-abstraction and pollution. Indeed, the increasingly urban nature of the borough presents difficulties for all its watercourses, with only about a third of river length assessed as being of good biological quality. Other key biodiversity issues include habitat fragmentation, human disturbance, loss of species and habitats in urban areas, and climate change.

Representation

The borough is a two-tier local authority area, which means it is administered by Eastleigh Borough Council, while Hampshire County Council is the authority responsible for education, social care, highways, libraries and museums. The borough's 19 wards are represented by 44 borough councillors and 7 county councillors. The borough council has set up five local area committees (LACs) to make decisions for their respective parts of the borough: Bishopstoke, Fair Oak and Horton Heath LAC; Bursledon, Hamble-le-Rice and Hound LAC; Chandlers Ford and Hiltingbury LAC; Hedge End, West End and Botley LAC; and Eastleigh LAC. There are Parish Councils at Bishopstoke, Botley, Bursledon, Fair Oak and Horton Heath, Hamble-le-Rice, Hedge, Hound, and West End. The borough is also represented at the national level by two Members of Parliament.

Public Consultation

The public's views on what should be the top priorities for the borough were sought during a joint consultation process on the Community Plan and Eastleigh Borough Council's Core Strategy, which is part of the Local Development Framework and will help shape development in the borough over the next 20 years. The process included a workshop for ESP members and other interested parties to examine statistical evidence on many different aspects of the borough. The workshop's activities were used to develop a joint consultation paper entitled *Our Community, Our Future*, as well as an associated questionnaire. These documents were publicly circulated and exhibited across the borough during winter 2008 / 2009 and produced over 400 responses. The findings on what respondents thought were the borough's top 5 priorities are shown in the chart below.



These findings, along with various residents' surveys, helped the ESP to develop a vision statement for the community plan. Shown in the next section, this statement was widely circulated among ESP members and others before being agreed on.



Where we are going – The vision for the plan

Outcomes

The aim of the Community Plan is to improve the quality of life for everyone so that people of all ages can enjoy living, working and relaxing in the borough. The plan respects and values the history and diversity of the towns and villages, new communities and countryside in the borough. To accomplish its aim, the plan seeks to achieve the following three top level outcomes:

- To ensure the continuing development of a happy and healthy community where all residents, whether in the town of Eastleigh or the southern parishes, have easy access to quality health, cultural and leisure services, and where everyone, especially the most vulnerable, can feel safe, secure and able to live life to the full
- To provide for the achievement of a thriving and inclusive economy, whereby investments made in lifelong learning, improving skills and supporting new businesses enable all local people to share in the benefits of sustainable economic development, and adapt to changing patterns of employment and demands for goods and services
- To secure the provision of an attractive and eco-friendly environment through protecting and enhancing the borough's natural resources and habitats, ensuring all forms of pollution are minimised, reducing needless travel by providing services close to homes, and concentrating – as far as possible - much needed and well designed new housing in our towns and urban areas

These three top-level outcomes have been developed further by the ESP to produce a more detailed vision statement, which is set out on the following two pages. The statement's purpose is to provide a fairly detailed picture of the kind of borough the ESP and its members would like to see brought into existence during the next 20 years. In effect, the statement consists of three sets of sub-outcomes, which are organised according to the top-level outcome to which they contribute.

Of course, the ESP's vision for the borough's future will not be turned into a reality unless local organisations and local people work together in a coordinated fashion to bring it about. For this reason, the statement includes a strong emphasis on partnership working and has been used as the basis for developing an action plan that sets out what the ESP's member organisations and linked partnerships will be doing over the next four years to help accomplish this vision for the borough.

Vision statement for the Borough of Eastleigh



Our vision is that in 20 years time Eastleigh Borough is:

■ A happy and healthy community...

- The community is confident, diverse and welcoming, and fosters healthy, supportive relationships and a strong sense of community identity and pride
- Community members take responsibility for their own decisions and actions, and look out for the needs of others as well as their own
- Residents enjoy healthy lifestyles, they participate in a wide range of sport, play and recreation activities, and there are low levels of smoking, obesity and alcohol or drug abuse across the borough
- Agencies work together to support everyone, especially those from disadvantaged groups, enabling them to access services and play a full role in community life
- Good mental, emotional and physical health for everyone is promoted, and all residents benefit from convenient, affordable access to the health-related services and advice they need
- The work of volunteers and carers is valued and supported by the community
- In all areas of the borough, residents and visitors have many opportunities to enjoy its rich culture and heritage
- Crime and anti-social behaviour are low, fear of crime is low, and vulnerable people feel safe and are protected from harm or abuse
- Housing needs are met, with provision for people with specific needs
- Quality health, shopping, education and recreation facilities are locally available and readily accessible to all
- People are able to live, work and travel safely throughout the borough

■ ...with a thriving and inclusive economy..

- A flourishing local economy benefits all sections of the community, so that poverty and social exclusion are reduced, local people have a wide range of employment opportunities, and there is an increased proportion of high quality jobs
- The borough plays an important role in the sub-regional economy, with developments at Eastleigh River Side and elsewhere providing jobs and services for local residents and the south Hampshire sub-region
- Residents of all ages have access to a wide range of high quality education and learning opportunities
- Businesses and other organisations work with local young people to enhance their qualifications and skills, so they can compete for, and keep, jobs
- High quality businesses provide advanced, knowledge-intensive or low-carbon technologies and services, or are active in the creative industries

- Support for local businesses provides advice and a variety of sites and premises to meet business needs, including small-scale starter and 'move-on' units
- High quality retail, leisure, community and cultural facilities ensure the vitality and attractiveness of Eastleigh town centre and other district and local centres
- The borough's historic heritage is protected, in particular where it contributes to the area's character or provides economic benefits

■ ...in an attractive and eco-friendly environment

- The borough has an identity distinct from Southampton, and its settlements have a strong sense of place in their countryside settings
- Demand for energy is low, with high standards of sustainable construction in new developments and improved insulation in existing buildings
- More power is generated from local renewable sources and new district energy systems are helping to save energy
- Utilities such as water and other infrastructure are provided in a sustainable manner to meet all local needs
- Pollution of air, land and water is low
- Most people are using sustainable forms of transport, including cycling and walking, with new development being located and laid out to reduce the need to travel by car
- New development achieves high standards of landscaping and design, creating an attractive and healthy environment
- The borough is adapting successfully to climate change, managing the natural evolution of biodiversity, limiting flood risk and reducing the consumption of resources, including water.
- Residents benefit from easy access to the natural environment, and the borough's network of green spaces and routes is well-managed, well-used and integrated with adjoining areas
- The borough's biodiversity and landscape are protected and enhanced

This vision will be delivered through effective partnership working that involves the members of the Eastleigh Strategic Partnership and the local community.



Who we have to help – The partners for the plan

ESP purpose

The Community Plan is overseen by the Eastleigh Strategic Partnership (ESP), which is a cross-sector, umbrella organisation that:

- brings together the public, private, community and voluntary sectors in the local area so that their initiatives and services support each other
- involves and is accountable to the community it serves
- functions by consensus, while its partners remain responsible and accountable for decisions on their own services and resources

The ESP takes account of the other partnerships operating in the area, and aims to:

- build links with existing partnerships, so as to avoid duplication, reduce bureaucracy and find opportunities for rationalising membership and activities
- improve links among local partnerships, so they know how they fit into the wider picture and can, where appropriate, move to simpler organisational arrangements

ESP Structure

Membership of the ESP is open to representatives from any public, private, voluntary or community organisation operating in the borough. It includes representatives of geographic communities, as well as those with interest or expertise in a specific issue. The members help shape the vision for the area and ensure this is reflected in the Community Plan. Meetings are held twice a year to enable members to keep up to date on the issues affecting the community, bring together different perspectives and contribute to inclusion. Opportunities are also provided for informal networking.

The ESP's business management is channelled through an Executive made up of representatives from: Eastleigh Borough Council; Hampshire Constabulary, Hampshire County Council; NHS Hampshire (formerly Hampshire PCT); the Hampshire Fire and Rescue Service; and One Community. The Executive oversees the Community Plan's implementation, sets targets and monitors performance.

The delivery of the actions in the Community Plan, and the management of their performance, is mainly the responsibility of a number of partnerships linked to the ESP. These partnerships include: the Children and Young People Locality Group Partnership for Eastleigh; the Eastleigh Community Learning Partnership (ECLP); the Eastleigh Community Safety Partnership; the Eastleigh Health and Well Being Partnership; and the Eastleigh Sport and Physical Activity Alliance (SPAA).



How we will conduct ourselves – The principles for the plan

ESP principles

The ESP has agreed that the following four main principles will underpin its work:

1 Sustainability

All partners are constantly balancing economic, social and environmental concerns. Decision-makers need to take account of the positive and negative effects of different approaches and solutions to problems and issues. We need to consider the effects of today's decisions on future generations.

2 Partnerships and sharing information

There are many well-established partnerships in the borough, working together to plan and deliver services. Partnerships are particularly useful where many organisations have some responsibility for a particular issue, or where large organisations need local input and support to tailor services to local needs. These existing groups will be responsible for fulfilling many of the plan's requirements. The ESP will need to coordinate policy and direction across these groups and identify any gaps or weaknesses that need to be tackled.

Effective sharing of information is essential if the ESP and its partners are to achieve their aims. Identifying what information is available, and what can be shared, will form part of the ESP's work. In this way duplication of information, and any gaps, can be identified and eliminated.

3 Access

All partners will consider the accessibility of their services and community support. Barriers to access include low income, mobility, language, disability, physical barriers, and the time and location of service delivery. Partners will work to provide services that make access as simple as possible for everyone in the community.

4 Focus on people

To make a real difference to local quality of life, it is important that partners maintain a strong focus on people and the particular issues that concern them. The plan will improve things for everyone, but the ESP is keen to give particular consideration to meeting the needs of the young, the vulnerable and older people. The ESP will also seek to promote equality of opportunity for all who live, work and visit the borough.



How we will get to our goal – The actions for the plan

ESP Action Plan

The following pages represent the action plan for the Community Plan. The priorities and actions in the action plan are organised so as to show how they will contribute to the achievement of the different top-level outcomes and sub-outcomes set out in the vision statement.

It should be noted that the action plan contains 4 different sets of priorities or actions:

- the priorities set out in the plans and strategies of the ESP's linked partnerships
- the actions to be undertaken by other borough-based partnerships
- the actions to be undertaken by individual organisations in the borough
- the actions to be undertaken by different service units within the borough council

The sub-outcomes listed in the vision statement have also been aligned against the priorities contained in the Hampshire Local Area Agreement (LAA) for 2008 to 2011. This is a three-year agreement between local partners and central government which sets out the priorities and targets for the Hampshire area. This agreement can be viewed on the internet at www3.hants.gov.uk/localareaagreement.htm

The Action Plan shows:

■ Priorities in ESP-linked partnership plans and strategies - that is:

- Eastleigh Community Safety Partnership Plan 2008 to 2011;
- Eastleigh District Children and Young People Strategy 2009 to 2012 (owned by the Children and Young People Locality Group Partnership for Eastleigh);
- Eastleigh Health Action Plan 2007 to 2010 (owned by the Eastleigh Health and Well-being Partnership);
- Housing Strategy for Eastleigh 2006 to 2011 (owned by the borough council)

■ Actions by other partnerships

■ Actions by individual organisations

■ Actions by Eastleigh Borough Council

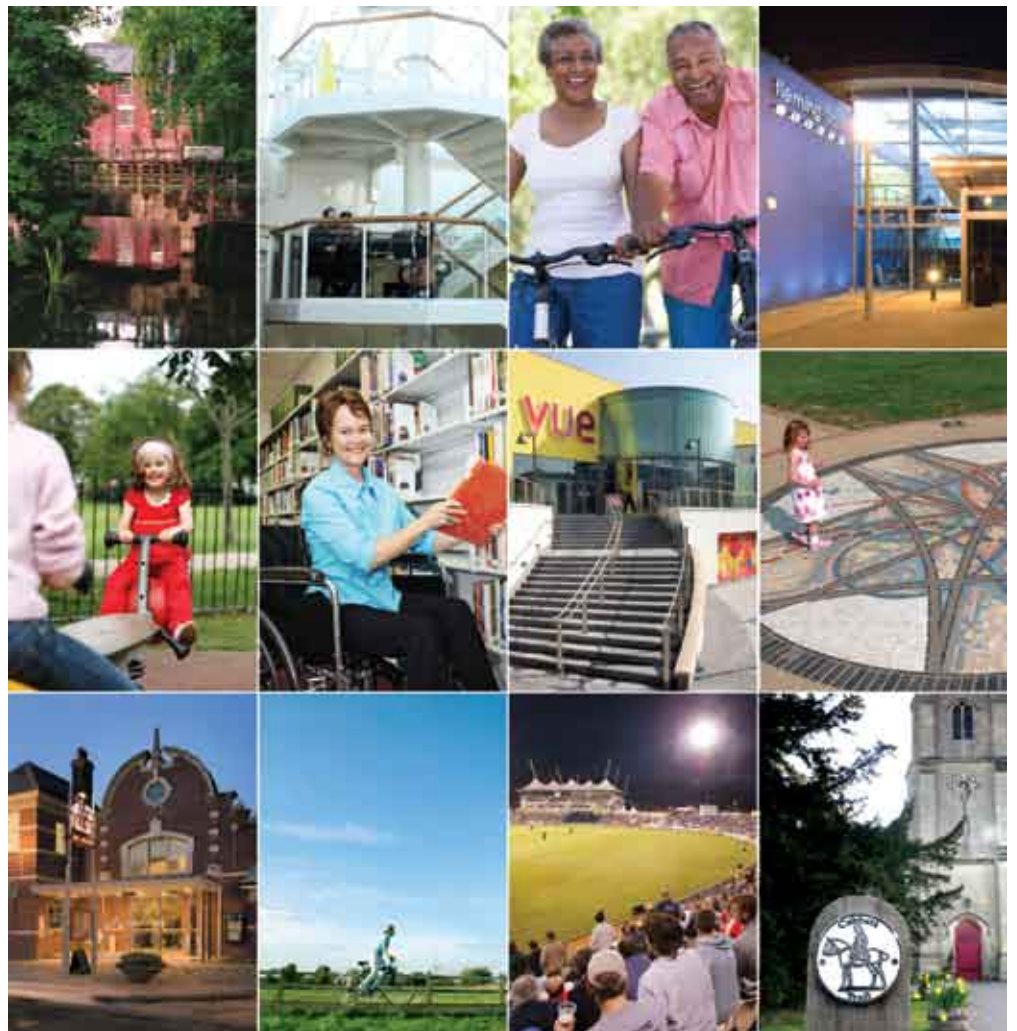
Abbreviations used in the Action Plan:

Local Area Agreement – LAA

Partnership for Urban South Hampshire – PUSH

Start Tackling Alcohol Responsibly – STAR

The order or numbering of headings or actions set out in the action plan does not reflect their relative level of priority or importance.



Action Plan for the Eastleigh Borough Community Plan:

- A happy and healthy community...
- ...with a thriving and inclusive economy...
- ...in an attractive and eco-friendly environment

Local Area Agreement

- » Improved community engagement
- » Strong third sector

ESP-Linked Partnerships

■ Children and Young People Strategy

- Enable young people to influence work of Children and Young People Locality Group
- Promote positive view of children and young people
- Support work of local youth forums
- Obtain up to date information from children and young people on issues affecting them
- Help communities develop their provision for children and young people
- Help develop local targeted youth support teams

Individual Organisations

■ First Wessex

- Promote community cohesion by community development, community integration and social capital initiatives
- Remodel sheltered and extra care schemes to enable greater use by the third sector and the wider community

■ One Community

- Engage with communities to identify their needs and work with them to develop solutions using the voluntary sector
- Support community initiatives by way of governance and funding advice

Eastleigh Borough Council

■ Culture

- Implement aspiration strand of Arts Strategy, which focuses on raising expectations and addressing preconceptions
- Implement cohesion strand of Arts Strategy, which involves engaging all sectors of the community, creating symbiotic partnerships, and providing an innovative programme of multi-disciplinary work

■ Local Areas

- Support the relationship between Eastleigh Borough Council and the voluntary sector
- Support Eastleigh's Youth Council
- Lead work to involve people from different ethnic and faith backgrounds by supporting the Racial Equality Forum, ethnic minority organisations and community events (e.g. the Mela)
- Deliver a new youth facility in central Eastleigh
- Facilitate youth forum consultations
- Invite public to contribute to every local area committee meeting
- Involve public in every major new scheme in local areas

Local Area Agreement

- » Reduced teenage pregnancies
- » Reduced anti-social behaviour
- » Reduced alcohol-related violence
- » Reduced drug offending
- » Reduced alcohol abuse
- » Improved community engagement

ESP-Linked Partnerships

■ Children and Young People Strategy

- Increase awareness among young people about alcohol and drug misuse including smoking
- Ensure access to appropriate information and advice on healthy living
- Help communities develop their provision for children and young people
- Encourage and support organisations to create opportunities for young people to volunteer

■ Community Safety Partnership Plan

- Reduce anti-social behaviour
- Reduce criminal damage
- Reduce impact of alcohol and drugs on crime and anti-social behaviour

■ Health Action Plan

- Increase healthy active living amongst adults and older people
- Improve sexual health of all, especially young people and at risk groups
- Reduce alcohol consumption by young people

Individual Organisations

■ First Wessex

- Support neighbourhood improvements by neighbourhood plans, improved interagency cooperation, community involvement in improvement initiatives, and local community safety initiatives
- Focus activity of tenant support workers on people at risk of losing their homes through offending behaviour
- Work to review and continuously improve services to ensure they are targeted at ESP priorities

■ One Community

- Encourage and support intergenerational activities and volunteering opportunities
- Facilitate provision of safety information to community members who may be hard to reach

Eastleigh Borough Council

■ Local Areas

- Help Local Area Groups to engage community leaders to address anti-social behaviour and develop supportive communities
- Provide diversionary activities such as mobile skate ramps

3

Residents enjoy healthy lifestyles, they participate in a wide range of sport, play and recreation activities, and there are low levels of smoking, obesity and alcohol or drug abuse across the borough

Local Area Agreement

- » Improved health and well-being, and reduced health inequalities
- » Reduced childhood obesity
- » Reduced drug offending
- » Reduced alcohol abuse

ESP-Linked Partnerships

■ Children and Young People Strategy

- Increase opportunities for children and young people to participate in physical activity and healthy eating
- Ensure access to appropriate information and advice on healthy living
- Increase awareness among young people about alcohol and drug misuse
- Support development of alcohol awareness education programmes

■ Health Action Plan

- Reduce obesity by healthy eating and physical activity among children and families
- Improve sexual health of all, especially young people and at risk groups
- Reduce alcohol consumption by young people
- Increase healthy active living amongst adults and older people
- Reduce smoking

■ Housing Strategy

- Improve health and well-being of local people

Other Partnerships

■ Sport and Physical Activity Alliance (SPAA)

- Work with school sports partnerships to establish school / club links
- Work with facility providers to ensure responsiveness to customers' needs and increased attendances
- Work with DC Leisure to support free swimming scheme for under 17s and over 60s

Individual Organisations

■ First Wessex

- Work in partnership with health services so that sheltered schemes deliver health and well-being sessions for people in later life
- Promote healthy lifestyles through a range of programmes responding to community needs
- Make developers' contributions towards play areas, public open space provision and recreational facilities

■ NHS Hampshire

- Improve access to sexual health services through service review and development
- Increase numbers using Quit4Life service
- Target neighbourhoods with high smoking prevalence

Eastleigh Borough Council

■ Corporate

- Encourage major sporting arenas (e.g. the Rose Bowl) to facilitate resident participation in sports and recreational activities

■ Culture

- Implement participation strand of Arts Strategy, which aims at promoting healthy lifestyles and social mobility
- Further develop The Point as a centre of excellence for dance and disability community companies

■ Local Areas

- Enhance physical activity in Norwood School with support from The Point's associate schools programme
- Work with schools to produce School Travel Plans
- Promote healthy eating through Cook and Eat courses in schools
- Support multi-agency STAR project on changing attitude and behaviour towards alcohol
- Work with schools sports partnerships, county sports partnership and other agencies to deliver government's target of five hours per week of physical activity for all 5 –16 year olds
- Refurbish and extend provision for young people's play and recreation activities
- Work with landowners to maximise public use of open spaces
- Increase number of people participating in 30 minutes of moderate activity five times a week
- Improve play provision (e.g. via new and refurbished sites and child / youth consultation)
- Provide summer programme of activities within walking distance of homes
- Provide Active Lifestyles Programme, including 'Healthworks' (GP exercise referral scheme) and 'Healthwalks' (programme of led and independent walks)

■ Planning

- Promote creation of high quality places
- Ensure identified needs for sport and recreation facilities are met in accessible locations
- Improve physical access to open space in ways that encourage walking and cycling
- Develop 'green infrastructure' proposals to encourage positive and integrated use of open space and countryside areas

4

Agencies work together to support everyone, especially those from disadvantaged groups, enabling them to access services and play a full role in community life

Local Area Agreement

- » Support for older people to live independently
- » Promotion of independent living for vulnerable people
- » Strong third sector

ESP-Linked Partnerships

■ Children and Young People Strategy

- Assist agencies to find ways to provide parenting education and support
- Increase support to families where children and young people are not attending school
- Support schools in reducing exclusions and identifying projects for young people not in school
- Support agencies in developing projects for children and young people at risk or already excluded from school
- Ensure agencies have up to date information on training and work opportunities

■ Health Action Plan

- Increase independence and engagement of older people

■ Housing Strategy

- Prevent homelessness and improve housing options
- Improve health and well-being of local people

Other Partnerships

■ Eastleigh Borough Council and Hampshire County Council

- Work with transport agencies to improve access and services

- Eastleigh Borough Council and One Community
 - Work in Eastleigh Southern Parishes to establish locations where older people can access information and activities
- Eastleigh Disabled Leisure Access Group (EDLAG)
 - Deliver specialised activities to meet needs
- Hampshire County Council and NHS Hampshire
 - Develop dementia services
- Hampshire County Council, NHS Hampshire, One Community, and the community and voluntary sector
 - Roll out Community Innovations Project to another location within the borough in 2010
 - Work with groups and charitable organisations who offer support to the disadvantaged members of the community

Individual Organisations

- First Wessex
 - Target care and support services towards people in later life and tenants who need support to sustain their tenancies

Eastleigh Borough Council

- Culture
 - Deliver activities especially tailored for the needs of older people and those with disability
 - Work with Lakeside school as part of The Point's associate schools programme
- Local Areas
 - Support access to telecare
 - Support people to live independently by providing a handy person scheme
 - Provide safety equipment for families with disabled children
 - Promote development of transport plans that prioritise non-car modes of transport to assist young people and those dependent on buses
 - Continue Passport to Leisure Scheme at Fleming Park Leisure Centre
- Planning
 - Secure affordable housing as a proportion of new-build housing
 - Consider policies to secure specialised housing to meet identified needs in appropriate locations
- Revenue and Benefits
 - Work in partnership with train companies and other organisations to enable disabled or older residents to travel at reduced costs

5

Good mental, emotional and physical health for everyone is promoted and all residents benefit from convenient, affordable access to the health-related services and advice they need

Local Area Agreement

- » Improved mental and emotional health of children and young people
- » Improved health and well-being, and reduced health inequalities

ESP-Linked Partnerships

- Children and Young People Strategy
 - Increase awareness of mental health and well being as an issue for children and young people
 - Increase opportunities for children and young people to participate in physical activity and healthy eating
 - Ensure access to appropriate information and advice on healthy living, as well as contraceptive

and sexual health services for young people

■ Health Action Plan

- Improve psychological health and well being of children and young people

■ Housing Strategy

- Improve health and well-being of local people

Other Partnerships

■ Teenage Pregnancy Local Implementation Team

- Increase availability of Chlamydia screening for young people

Individual Organisations

■ DC Leisure

- Run MEND (Mind, Exercise, Nutrition and Do it) courses at Fleming Park

■ First Wessex

- Promote healthy lifestyles through a range of healthy eating and exercise programmes
- Ensure all housing refurbishments and redevelopments address fuel poverty and lifetime homes
- Ensure support officers signpost tenants to relevant health services

■ Hampshire County Council

- Provide Confident Parents, Confident Kids courses, workshops and classes for those with children aged 5 to 13
- Support work of Parenting Officers
- Implement Hampshire Teenage Pregnancy Action Plan in Eastleigh

■ NHS Hampshire

- Improve access to sexual health services through service review and development

Eastleigh Borough Council

■ Local Areas

- Manage Eastleigh Youth Counselling scheme
- Develop childcare provision, including breakfast and after school clubs
- Engage young people in promoting play and facilities, recruiting play champions, and consultation events
- Provide grants to older persons groups for social events
- Support community well-being events (e.g. local carnivals)
- Ensure promotional literature is available on websites and at sports facilities
- Ensure information is sent regularly to households via Borough News and brochures
- Work with Culture Unit to develop a more holistic approach to mental and physical well-being
- Support sexual health drop-ins at area youth facilities

■ Planning

- Seek to secure locally accessible health care facilities for all, as well as facilities that encourage healthy exercise

6

The work of volunteers and carers is valued and supported by the community

Local Area Agreement

- » Strong third sector

ESP-Linked Partnerships

■ Health Action Plan

- Support carers

Other Partnerships

- Hampshire County Council Adult Services and NHS Hampshire
 - Develop carers strategy

Individual Organisations

- First Wessex
 - Recognise the valuable contribution people in later life make to the care agenda and support their role by providing appropriate services and facilities
- Hampshire County Council
 - Implement self-directed care via the 'Total Transformation Project' (OPAL / CAB)
- One Community
 - Promote volunteering and good practice in volunteer use
 - Seek funds to maintain and expand services to carers
 - Start a bereavement project for carers

Eastleigh Borough Council

- Local Areas
 - Ensure at least 20% of leisure grants go to volunteers
 - Nominate volunteers for annual Hampshire Sports Awards
 - Offer support and advice for clubs, coaches and officials

7

In all areas of the borough, residents and visitors have many opportunities to enjoy its rich culture and heritage

Local Area Agreement

- » Nothing specific

Eastleigh Borough Council

- Culture
 - Implement actions of cultural strategy that focus on: developing creative partnerships with the education sector; placing participation at the heart of the cultural offer; promoting local distinctiveness for the borough's communities; working in partnership with others to preserve, interpret and promote the built heritage of the borough; putting investment into cultural facilities and broadening provision; developing young talent; and celebrating culture
- Planning
 - Safeguard and maintain the borough's built heritage
 - Seek to ensure convenient access to a range of cultural activities

8

Crime and anti-social behaviour are low, fear of crime is low, and vulnerable people feel safe and are protected from harm or abuse

Local Area Agreement

- » Reduced alcohol-related violence
- » Reduced drug offending
- » Reduced anti-social behaviour
- » Children safeguarded

ESP-Linked Partnerships

- Children and Young People Strategy
 - Advocate for more early prevention work to reduce youth crime

- Increase awareness among young people about alcohol and drug misuse including smoking
- Support development of alcohol awareness education programmes
- Support schools in reducing exclusions and identifying projects for young people not in school
- Promote positive images of children and young people
- Support work of the Domestic Violence Forum
- Work with schools to identify resources to help children and young people who are bullied
- Work with children and young people to raise awareness of internet and email safety

■ Community Safety Partnership Plan

- Reduce anti-social behaviour
- Reduce violent crime
- Reduce vehicle crime
- Reduce criminal damage
- Reduce fear of crime
- Reduce impact of alcohol and drugs on crime and anti-social behaviour
- Reduce re-offending

■ Housing Strategy

- Prevent homelessness and improve housing options

Individual Organisations

■ First Wessex

- Promote community safety by supporting and providing diversionary activity in partnership with other agencies
- Support the establishment of a Family Intervention Project in partnership with Eastleigh Borough Council and other agencies
- Support the ongoing creation of No Cold Calling Zones within the community
- Deliver support programmes for people who are recovering from substance abuse and offer accommodation with support
- Ensure developments comply with the Police's Secured by Design initiative
- Roll out new policies on safeguarding (for adults and children) across the organisation

Eastleigh Borough Council

■ Culture

- Provide diversionary activities for young people
- Carry out peer to peer projects on key issues

■ Local Areas

- Rewrite Children and Young People Strategy to focus on safeguarding review
- Provide diversionary activities for young people

■ Planning

- Promote quality places that foster civic pride, curb anti-social behaviour and vandalism, and reduce fear of crime
- Enable provision of diversionary facilities for young people

9

Housing needs are met, with provision for people with specific needs

Local Area Agreement

- » [More affordable housing](#)

ESP-Linked Partnerships

■ Children and Young People Strategy

- Support work of housing associations

- Support housing forum in their work to reduce homelessness among young people

■ Health Action Plan

- Improve provision for extra care housing and reduce fuel poverty

■ Housing Strategy

- Provide new homes within sustainable communities
- Prevent homelessness and improve housing options
- Provide housing services in a fair and equitable way

Individual Organisations

■ First Wessex

- Ensure care and support division responds to the housing needs of people with specific needs
- Comply with Eastleigh Borough Council's target of 3% of new affordable housing being built to wheelchair accessible standards
- Work with occupational therapists to incorporate necessary adaptations where possible
- Comply with the requirements of Lifetime Homes as far as possible

Eastleigh Borough Council

■ Planning

- Ensure the provision of sufficient new dwellings of an appropriate mix of type and size to meet needs
- Provide policies to secure affordable housing, provide housing to meet identified specialised needs and promote Lifetime Homes

10

Quality health, shopping, education and recreation facilities are locally available and readily accessible to all

Local Area Agreement

- » [Local accessibility of services by walking](#)

ESP-Linked Partnerships

■ Children and Young People Strategy

- Find funds to increase provision for children and young people in consultation with them
- Support extended schools agenda

■ Housing Strategy

- Provide new homes within sustainable communities

Individual Organisations

■ First Wessex

- Ensure new developments meet minimum Housing Quality Indicators (based on the distance from shopping, educational and recreational facilities) required to obtain grant funding

Eastleigh Borough Council

■ Culture

- Create new facilities with a pioneering creative approach to programming and commissioning

■ Local Areas

- Fund youth facility and youth recreation sites
- Identify recreational requirements and establish quality guidelines

■ Planning

- Identify requirements for community infrastructure associated with new developments

and secure locally accessible provision through various funding streams, including developers' contributions

- Enable sustainably located retail provision to meet local needs

11

People are able to live, work and travel safely throughout the borough

Local Area Agreement

- » Children safeguarded
- » Improved road safety
- » Improved quality of life and safety in villages

ESP-Linked Partnerships

■ Children and Young People Strategy

- Support work of the Domestic Violence Forum
- Work with schools to identify resources to help children and young people who are bullied
- Work with children and young people to raise awareness of internet and email safety
- Ensure young people have regular and accessible public transport

■ Community Safety Partnership Plan

- Reduce violent crime

Individual Organisations

■ Hampshire Fire and Rescue Service

- Implement the Eastleigh Fire Station Community Safety Action Plan, which seeks to ensure the safety of the public at home, at work, and whilst travelling in the borough

Eastleigh Borough Council

■ Planning

- Provide policies to improve community safety and its perception
- Ensure development does not prejudice and where possible enhances road safety

12

A flourishing local economy benefits all sections of the community, so that poverty and social exclusion are reduced, local people have a wide range of employment opportunities, and there is an increased proportion of high quality jobs

Local Area Agreement

- » Reduced gap between achievements plus life chances of vulnerable and other children plus young people
- » Improved life chances of 16 –19 year olds at risk of underachievement
- » High employment rate
- » Business Growth
- » Promotion of independent living for vulnerable people

Other Partnerships

■ PUSH (Employment and Skills Board)

- Engage and up-skill the resident working age population
- Investigate the potential for a greater multi-agency collaboration covering health, employment, skills, etc.
- Encourage public sector bodies to sign up to Skills Pledges to demonstrate the benefits to private sector

Individual Organisations

■ First Wessex

- Create programmes to address worklessness and lack of basic skills
- Provide information / advice and guidance services to help tenants back into work
- Identify ways to support socially excluded people into work or education via the Tenancy Support Planning Framework
- Develop training initiatives with tenants and local residents
- Promote volunteering as re-entry route to work
- Develop community capacity building
- Support creation of merged Credit Union for Eastleigh

■ Job Centre Plus

- Work with local employers to develop Local Employment Partnerships and support the delivery of government employment programmes targeted at people out of work

Eastleigh Borough Council

■ Corporate

- Use Council's 'Power of Well-being' and other enabling powers in appropriate cases to facilitate economic growth and prosperity, including the development or enhancement of major sports, hotel and conference facilities

■ Economic Development

- Work with local education, employment and training providers to reduce economic inactivity and ensure skills meet employers' needs

■ Local Areas

- Support children's centres and ensure they are woven into community life where they can have maximum impact

■ Planning

- Establish a planning policy framework to encourage sustainable economic development that meets local needs

■ Revenue and Benefits

- Undertake a benefit take-up campaign for Attendance Allowance for the over 80s

13

The borough plays an important role in the sub-regional economy, with developments at Eastleigh River Side and elsewhere providing jobs and services for local residents and the South Hampshire sub-region

Local Area Agreement

- » High employment rate
- » Business growth

Other Partnerships

- Eastleigh River Side Programme Board
 - Secure the regeneration of Eastleigh River Side

Eastleigh Borough Council

- Economic Development
 - Work with neighbouring authorities and PUSH to use borough's wealth of assets in a joined up way to ensure it becomes one of best performing economic centres in South Hampshire
 - Establish and coordinate with PUSH the actions required to progress the Eastleigh River Side Programme, including project management, funding plan, land and property acquisition, marketing and communications, and a planning framework
 - Support the economic regeneration of the sub-region resulting from the development of a high class sporting and entertainment venue, including a four star hotel, at the Rose Bowl
- Planning
 - Establish planning framework for regeneration at Eastleigh River Side as part of Core Strategy
 - Provide policies for key employment sites and identify sufficient additional land to accommodate development required to secure economic growth and restructuring
 - Protect existing sustainably located employment land from redevelopment for non-employment uses

14

Residents of all ages have access to a wide range of high quality education and learning opportunities

Local Area Agreement

- » Improved early years and statutory education

ESP-Linked Partnerships

- Children and Young People Strategy
 - Improve information on and access to learning opportunities
 - Help communities develop provision for children and young people
 - Find funds to increase provision for children and young people

Eastleigh Borough Council

- Culture
 - Deliver elements of Arts Strategy that focus on participation, education and excellence, and seek to develop creative partnerships with education sector
- Economic Development
 - Promote community-wide learning by support to Southern Entrepreneurs, Train to Gain, Community and Family Learning, and UK Online Training Centre
- Planning
 - Enable the development of training and further education facilities
 - Provide policies to secure funding for employment training from specific forms of development

Other Partnerships

- Chamber of Commerce
 - Provide training courses in business skills and seminars to up-skill members
- Eastleigh Community Learning Partnership
 - Increase, promote, encourage and support opportunities for learning
 - Increase skills, knowledge and self confidence for individuals and groups
 - Consult and respond to locally identified needs and deliver learning programmes locally where appropriate
 - Work with key stakeholders in identifying and coordinating funding and learning programmes
 - Share resources, knowledge and skills
 - Monitor and evaluate delivery of learning to participants
 - Signpost services where appropriate

15 Businesses and other organisations work with local young people to enhance their qualifications and skills, so they can compete for, and keep, jobs

Local Area Agreement

- » Improved skills levels
- » High employment rate
- » Improved early years and statutory education
- » Improved life chances of 16 to 19 years olds at risk of underachievement

ESP-Linked Partnerships

- Children and Young People Strategy
 - Improve information on and access to learning opportunities
 - Support agencies in developing projects for children and young people at risk or excluded from school
 - Ensure agencies have up to date information on training and work opportunities
 - Provide appropriate access to employment information and advice

Individual Organisations

- First Wessex
 - Encourage contractors on large schemes to offer training and employment opportunities
- Learning and Skills Council
 - Work with partners to increase the number of local adults with level 2, 3 and 4 qualifications by Hampshire County Council appointing a Strategic Skills Coordinators and by the enhanced use of Train to Gain services
- Solent EBP
 - Work with local schools and colleges to increase the opportunities open to young people through careers events, mentoring, partnerships with local businesses, and training

Eastleigh Borough Council

- Economic Development
 - Commission and deliver various initiatives with education and business partners aimed at raising aspirations for all young people, with a particular focus on those at risk or NEETs (not in education employment and training)
- Local Areas
 - Work with children's services and schools to enhance facilities and opportunities on and off site
- Planning
 - Provide policies to secure funding for employment training from specific forms of development

Other Partnerships

- Chamber of Commerce
 - Promote Young Chamber initiative with local schools
- Eastleigh Consortium
 - Raise the achievement of pupils / students through sharing good practice
 - Improve the transition of pupils between sectors and into the world of work
 - Increase the effectiveness of management in schools and colleges
- PUSH
 - Raise skills in line with Employment and Skills Strategy
 - Support PUSH Ahead Challenge with young people in schools

16

High quality businesses provide advanced, knowledge-intensive or low-carbon technologies and services, or are active in the creative industries

Local Area Agreement

- » Business growth

Other Partnerships

- Hampshire Economic Partnership
 - Support and promote Enterprise Hubs and Innovation Centres
- PUSH
 - Ensure knowledge exchange and innovation are at the centre of economic development
 - Understand and take actions to meet the needs of key growth sectors and clusters
 - Deliver leading edge ICT infrastructure

Individual Organisations

- Envirobusiness
 - Give intensive assistance to potential high performing businesses
- Local Universities
 - Create and support spin out companies
- SEEDA
 - Provide Innovation and Growth teams to support the development of new businesses and innovations
 - Fund Business Link services

Eastleigh Borough Council

- Culture
 - Implement artist quarters initiative
 - Support graduate retention in creative industries
 - Carry out Swan Studios feasibility study for establishment of affordable studio space for creative industries start ups
 - Support domicile project for training and development of artists from early, pre-career through to established regional artists
- Economic Development
 - Carry out inward investment and marketing actions to attract high quality businesses
 - Develop clusters and collaborative networks to promote business confidence and facilitate knowledge transfers

17 Support for local businesses provides advice and a variety of sites and premises to meet business needs, including small-scale starter and 'move-on' units

Local Area Agreement

- » High employment rate
- » Business growth

Other Partnerships

■ Chamber of Commerce

- Provide a representative voice for business, and training and networking opportunities to develop the local economy

Eastleigh Borough Council

■ Economic Development

- Develop, commission and provide a range of business development and support services, including provision of business premises to meet local needs

■ Planning

- Identify the variety of sites and premises needed

■ Revenue and Benefits

- Promote business rate relief to give financial assistance to business

18 High quality retail, leisure, community and cultural facilities ensure the vitality and attractiveness of Eastleigh town centre and other district and local centres

Local Area Agreement (18 and 19)

- » Nothing specific

Eastleigh Borough Council

■ Corporate

- Support, where appropriate, the provision of hotel, sport and concert facilities, e.g. at the Rose Bowl

■ Culture

- Complete development of Phase 3 at the Point
- Complete development of the theatre at Wildern School

■ Economic Development

- Ensure effective town centre management, a robust town centre partnership, and growth of the evening economy

■ Planning

- Provide policies to promote regeneration in Eastleigh town centre and to protect and strengthen local centres to better meet the needs of local communities
- Improve the built environment in Eastleigh town centre and encourage strong urban design to ensure that it remains the commercial focus of the borough

19 The borough's historic heritage is protected, in particular where it contributes to the area's character or provides economic benefits

Eastleigh Borough Council

■ Planning

- Review and maintain policies to safeguard the character of conservation areas and the fabric and setting of listed buildings

20 The borough has an identity distinct from Southampton, and its settlements have a strong sense of place in their countryside setting

Local Area Agreement

- » Nothing specific

Eastleigh Borough Council

Local Areas

- Work to retain countryside gaps between settlements and prevent their coalescence

Planning

- Provide policies aimed at maintaining the separate identity of settlements and at improving design quality, local 'quality of place' and local distinctiveness

21 Demand for energy is low, with high standards of sustainable construction in new developments and improved insulation in existing buildings

Local Area Agreement

- » Reduced fuel poverty
- » Climate change mitigation

ESP-Linked Partnerships

Housing Strategy

- Improve quality and thermal efficiency of existing housing

Individual Organisations

First Wessex

- Ensure developments attain at least Level 3 of the Code for Sustainable Homes where publicly funded (carbon dioxide emissions are mandatory standards in the code)
- Take opportunities when housing stock is refurbished to improve standards of insulation

Eastleigh Borough Council

Local Areas

- Work with partners to reduce energy consumption at Fleming Park and The Hub

Planning

- Provide policies to secure improved environmental standards in all new buildings which will reduce consumption of energy, non-renewables and water

Sustainability

- Help community to reduce their energy consumption
- Ensure any new council-owned property is "carbon neutral"
- Provide insulation projects for homes and community buildings

22 More power is generated from local renewable sources and new district energy systems are helping to save energy

Local Area Agreement

- » Climate change mitigation

Individual Organisations

First Wessex

- Increase use of renewables on developments

Eastleigh Borough Council

■ Planning

- Support development that will provide renewable energy or will minimise the demand for energy from non-renewable sources

■ Sustainability

- Explore opportunities for District Energy schemes
- Promote renewable energy projects and awareness raising activities to reduce CO² emissions

23 Utilities such as water and other infrastructure are provided in a sustainable manner to meet all local needs

Local Area Agreement

- » Nothing specific

ESP-Linked Partnerships

■ Housing Strategy

- Provide homes within sustainable communities

Individual Organisations

■ First Wessex

- Ensure developments attain Level 3 of the Code for Sustainable Homes where publicly funded (water use is a mandatory standard in the code)

Eastleigh Borough Council

■ Planning

- Provide policies aimed at maintaining or improving the quality of water in the borough's water courses
- Ensure new developments can access sustainable water resources, and adopt measures to reduce water consumption
- Ensure the provision of adequate transport and other infrastructure with new development

■ Sustainability

- Promote sustainable water resource management

24 Pollution of air, land and water is low

Local Area Agreement

- » Climate change mitigation

Eastleigh Borough Council

■ Environmental Health

- In conjunction with partner agencies, seek to secure reduced levels of air, land and water pollution

■ Planning

- Provide policies and proposals to reduce air pollution, particularly in Air Quality Management Areas
- Provide policies aimed at maintaining or improving the quality of water in the borough's water courses

25 Most people are using sustainable forms of transport, including cycling and walking, with new development being located and laid out to reduce the need to travel by car

Local Area Agreement

- » Climate change mitigation
- » Reduced road congestion

ESP-Linked Partnerships

- Housing Strategy
 - Provide new homes within sustainable communities

Individual Organisations

- First Wessex
 - Support neighbourhood improvements
 - Promote interagency cooperation at neighbourhood level
 - Promote community consultation and engagement in neighbourhood improvement initiatives
 - Develop a local travel plan for Velmore Estate

Eastleigh Borough Council

- Planning
 - Secure, in the design and layout of new development, provision for safe and convenient access on foot, by bicycle and by public transport
 - Develop proposals to ensure new developments are as accessible as possible by means of transport other than the car
- Transportation and Engineering
 - Increase modal share of cycling and walking
 - Improve the cycling infrastructure
 - Increase safety of cycling and cycle security
 - Promote provision and coordination of public transport

26 New development achieves high standards of landscaping and design, creating an attractive and healthy environment

Local Area Agreement

- » Improved health and well-being, and reduced health inequalities

ESP-Linked Partnerships

- Housing Strategy
 - Provide new homes within sustainable communities

Individual Organisation

- First Wessex
 - Involve a landscape architect to ensure the landscaping of key new schemes is of high quality

Eastleigh Borough Council

- Direct Services
 - Ensure high standards in the management and maintenance of the public realm

■ Planning

- Provide policies aimed at improving design quality, 'quality of place', and encouraging local distinctiveness

27 The borough is adapting successfully to climate change, managing the natural evolution of biodiversity, limiting flood risk and reducing the consumption of resources, including water

Local Area Agreement

- » More efficient use of material resources
- » Adaptation to climate change

Eastleigh Borough Council

■ Countryside and Trees

- Implement Biodiversity Action Plan
- Identify opportunities for managed coastal realignment to enable landward movement of habitats in response to sea level change
- Manage countryside sites, open spaces and other council-owned land for public use in a way that maintains and supports biodiversity

■ Local Areas

- Support Local Area Committee involvement in Greening Campaign

■ Planning

- Ensure new development incorporates features necessary to adapt to climate change and to mitigate the impacts of climate change
- Provide policies to protect and enhance nature conservation interests and biodiversity
- Provide policies to ensure new developments are not at risk from flooding and do not exacerbate flooding problems elsewhere
- Limit new development in areas at risk from flooding
- Establish policies that reduce the consumption of resources and that reduce the waste of resources in new development

■ Sustainability

- Encourage actions to adapt to climate change
- Support actions to manage biodiversity during climate change
- Support actions to manage flood risk due to climate change

28 Residents benefit from easy access to the natural environment, and the borough's network of green spaces and routes is well-managed, well-used and integrated with adjoining areas

Local Area Agreement

- » Nothing specific

Individual Organisations

■ First Wessex

- Contribute to the Council's green spaces via Section 106 Agreements

Eastleigh Borough Council

■ Local Areas

- Identify and support programmes of enhancements to public open spaces
- Secure green space in partnership with Town and Parish partners via asset transfers of land and open space

■ Planning

- Propose and support a variety of opportunities to link urban areas with green spaces and the open countryside

■ Transportation and Engineering

- Develop a network of pedestrian routes that connect transport interchanges, local centres and employment areas with the countryside access network, green spaces and the open countryside
- Encourage a coordinated approach in design considerations for pedestrians
- Ensure all new developments provide sufficient pedestrian facilities
- Develop innovative projects to encourage walking and secure improvements to the walking environment

29

The borough's biodiversity and landscape are protected and enhanced

Local Area Agreement

- » Nothing specific

Individual Organisations

■ First Wessex

- Commission ecology reports for all development schemes in order to identify how best to minimise the impact of the scheme on the local flora and fauna

Eastleigh Borough Council

■ Countryside and Trees

- Manage countryside sites, open spaces and other council-owned land for public use in a way that maintains and supports biodiversity
- Manage trees in a way that maintains and supports biodiversity while remaining safe for human beings

■ Planning

- Include policies in the Core Strategy that are designed to protect and enhance biodiversity and landscape quality

Performance Monitoring and Management of the Action Plan

The ESP Executive seeks to accomplish the three top-level Community Plan outcomes by making progress on the 29 sub-outcomes listed in the Vision Statement and on the associated actions listed in the action plan. It proposes to monitor progress towards the three outcomes annually using the sub-outcomes as indicators and, in addition, by taking regular updates on performance from the ESP-linked partnerships.

The plan has deliberately been designed so that each action will be included within an existing performance process which is managed either by individual organisations or by one of the linked partnerships. However, a red, amber, green (RAG) analysis of progress against the actions will also be undertaken annually, in order to provide the ESP with an update on progress. While this will be done primarily for information, the ESP Executive retains the option to intervene where thought necessary.



Eastleigh Strategic Partnership

c/o Vince Johnston
Performance Development Manager
Eastleigh Borough Council
Civic offices
Leigh Road
Eastleigh
Hampshire
SO50 9 YN

023 8068 8077
vince.johnston@eastleigh.gov.uk
www.eastleighstrategicpartnership.org

This information can be provided in alternative formats including large print, audio tape, Braille and other languages by emailing direct@eastleigh.gov.uk, calling 023 8068 8000, or texting 07797 877001